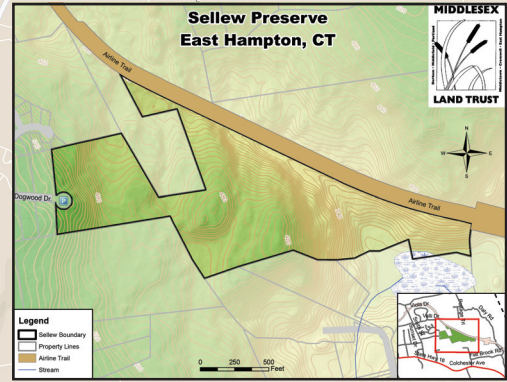


HIGHLIGHTS IN EAST HAMPTON, CT

AIR LINE STATE PARK TRAIL



The Joseph N. Goff House Museum and Cultural Center 2 Barton Hill Rd.

This historically preserved building contains artifacts and memorabilia of Connecticut's 84th Governor and East Hampton native, William A. O'Neill. The Cultural Center sponsors musical and enrichment programs, a proud testament to our community's cultural, civic, and architectural heritage.



The Chatham Historical Museum and School House 6 Bevin Blvd.

A private, nonprofit, organization open to the public the first Sunday of each month from 2-4pm. The museum is loaded with displays of historic artifacts, photographs, bells, toys, costumes, tools and items of interest.

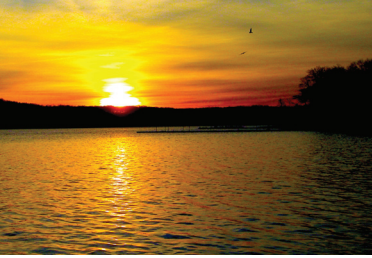


AirLine Cycles
55 Main St., (860) 365-5496
Visit our family friendly, local bike shop in the Belltown Village Center for new or used bicycles, tune-ups and repairs.



Bicycle Repair & Tool Stand
Located on the trail (about 1/2 mile on the right after Cranberry Bog toward Forest Colchester). Spearheaded by Eagle Scout Cody Voelker, installed in 2021.

Belltown Village Center
Historic Main Street is lined with eclectic boutiques offering clothing, local handicrafts, jewelry, flowers, art, antiques, furniture and even window blinds. You will also find eateries, a coffee house, artisan bakery, liquor store, barber shop, hair salons, and Public Library.



Lake Pocotopaug Sears Park, 68 North Main St.

Nestled on the westerly shore of Lake Pocotopaug is our beautiful Sears Park. Featuring a public beach, playscape, pavilion, picnic shelter, gazebo, boat launch, tennis and basketball courts open to East Hampton residents. Please use extreme caution while cycling on the busy roads from the Air Line trail to Sears Park.



EAST HAMPTON

Comstock Covered Bridge East Hampton

The Bridge spans the Salmon River in southeastern East Hampton and is named after the town's first postmaster, Franklin G. Comstock. It is listed on the National Register of Historic Places as one of only three remaining historical covered bridges in the state. It serves as a well-preserved example of a Howe truss – a design patented in 1840 – and also provides the only remaining example in Connecticut of a wooden pony truss.



- Historic/Highlights**
1. Cobalt Station Sign
 2. Joseph N. Goff House Museum
 3. Chatham Historical Society
 4. Sears Park, Lake Pocotopaug
 5. Bishop's Cut
 6. Bevin Brothers Bell Factory
 7. Cranberry Bog

- Bike Shop/Repair**
1. Air Line Cycles
 2. Repair Station

- Camping**
1. Nelson's Family Campgrounds
 2. Markham Meadows

- Food/Snacks**
1. Pizzeria DaVinci
 2. The Tavern on 66
 3. Rule of 3 Brewery
 4. PO's Rice and Spice
 5. ECO Coffee
 6. Main Street Pizza
 7. Gulf Gasoline Station

- Parking**
1. Depot Hill
 2. Aldens Crossing
 3. Forest Street
 4. Town Hall Road
 5. Main Street
 6. Watrous Street
 7. Smith Street



Rapallo Viaduct



AIR LINE STATE PARK TRAIL EAST HAMPTON

Mileage	Date
Mileage	Date
Mileage	Date
Mileage	Date
Mileage	Date
Mileage	Date

East Hampton

East Hampton is located 22 miles south of the state capital of Hartford and is equidistant from Boston and New York City. Our town is known for its rich history, environmental assets, and small town charm. We strive to preserve our rural-suburban character, our farmlands, watershed land, and historic structures by taking a long-term view. Enriching quality of life, respecting town heritage, and building community are among our highest priorities.

Pocotopaug, at 512 acres. State parks and forests surround us on our northern, southern and western borders, along with the famous Comstock Covered Bridge across the Salmon River.

In East Hampton you will find a community that supports a rural/suburban lifestyle that is family oriented. It is supported by a quality school system, two public libraries, two history museums, local parks with recreational programming, and two campgrounds, Nelson's Family Campground and Markham Meadows.

We are home to one of Connecticut's largest inland water bodies, Lake



FOOD & SNACKS

1. Pizzeria Da Vinci
363 West High Street
davincict.com
860-267-4174

2. The Tavern on 66
227 West High Street
thetavernon66.com
860-267-6569



3. Rule of 3 Brewery
201 W High Street, Unit B1
ruleof3brewing.com
860-729-2969

4. Po's Rice and Spice
97 Main Street
posriceandspice.com
860-365-5955

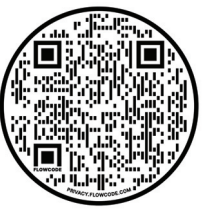
5. ECO Coffee House
82 Main Street
eco-coffee-house.business.site

6. Main Street Pizza
87 Main Street A
860-267-0326

7. Gulf Gasoline
100 Main Street
860-267-1990



Scan for current list.



TRAIL TIPS

- Horses and riders have right of way.
- Bring water and a cell phone.
- Let someone know where you're going and when you might return.
- Clean up after your pets.
- Carry out what you carry in.
- If you see something, say something.

For additional copies of this map, please email jhall@easthamptonct.gov

AIR LINE STATE PARK TRAIL HISTORY

In the 1960s, over fifty miles of the rail bed from East Hampton to the Massachusetts border were acquired by the Connecticut State Park System to construct a recreational linear park.

This trail has a colorful past. The "Air Line" was envisioned as a direct line between New York City and Boston. It opened in 1873 and 25 miles shorter, it offered fierce competition to the shoreline rail service from New York to Boston. The mesmerizing, white-painted express train, known as the Ghost Train, made the run between Boston and New York in six hours, a record time for 1884.

The construction of the new rail line contained ambitious feats of engineering, blasting through granite hills, navigating deep valleys and rivers along the route. The Air Line Railroad's "Ghost Train" began in 1891 and was designed to attract wealthy travelers. Luxurious Pullman cars were painted white with gold trim, and the staff of the train wore formal white uniforms.



The catastrophic Great East Thompson Train Wreck on December 4, 1891 clouded the introduction of this fast new rail service. It was one of the greatest train wrecks in American history, and the only train accident to involve four trains. Still, over the next four years, successful businessmen and prominent citizens, including President Benjamin Harrison, rode the increasingly well-known Ghost Train. As it sped across eastern Connecticut, its luminescent cars were easily recognized, especially at twilight.

In the new 20th century, technology increased, railroad engines became faster, rail cars became longer, everything became heavier and after World War II, access to automobiles and interstate highways reduce the profitability of rail travel. The quaintness of the Air Line's winding grades as well as the weight restrictions of the spindly trestle bridges began to show its limitations. During its construction, the Air Line Railroad was expensive and controversial, but its operational costs would lead to its ultimate demise and abandonment. Passenger service on the Air Line ceased by 1937, and the track was completely abandoned by 1965.

Today, visitors enjoy scenic panoramas, village life, wildlife, hiking trails, and the tranquility of the rural landscape. The United States Department of the Interior recognized the southern section of the Air Line State Park Trail as a national recreation trail in 2002.

For more maps in this series, email alspt.alliance@gmail.com or visit airlinestateparktrailalliance.org.

This project was funded by the State of Connecticut through the Department of Energy and Environmental Protection with a Connecticut Recreational Trails Program grant, with match funding from CT RC&D, the twelve towns along the ALSPT, and many partner organizations.

AIR LINE STATE PARK TRAIL ALLIANCE



PARKING

Many parking areas serve the Air Line State Park Trail. Some primary locations are:

THOMPSON

- Large parking lot at 121 Riverside Dr, (Rt 12, Mechanicsville)
- Pull off for a few cars at Air Line trail crossing, 388 Sand Dam Rd
- 5 car parking lot, located at 662 East Thompson Rd, near the junction of New Rd

POTNAM

- 18 Kennedy Dr, across from Canal
- 80 Kennedy Dr, directly across from the South entrance of Simonzi Park
- 98 Kennedy Dr
- 165 Kenedy Dr (DMV lot)

POMFRET

- 18 car paved parking lot at Pomfret Station, 13 Railroad Ave (off of Rt 169)
- Pomfret Town Hall, 5 Haven Road (Rt 44) paved parking adjacent to trail
- Parking available in rear of Town owned paved parking lot at Pomfret Community Center, 207 Mashamoquet Rd (Rt. 44)
- Wrights Crossing Road

HAMPTON

- Potter Rd 0.6 mile north of its intersection with Rt 6 in Goodwin State Forest

WINDHAM

- Intersection of Beaver Hill Rd and Windham Rd (Rt 203) in North Windham, at the CT Eastern Railroad Museum and in downtown Willimantic.

COLUMBIA

- Rt 87, Cook Hill Rd and Village Hill Rd

HEBRON

- Church Street, Rte 85; Grayville Road (limited); and Old Hartford Road.

EAST HAMPTON

- Depot Hill, Cobalt; Aldens Crossing (at Rt 16); Forest St (Between Hayes Rd and Childs Rd); Town Hall Rd (Off Main St.); Main Street; Watrous Street; Smith Street (at Cranberry Bog)

POTLAND

- Parking at 82 Middle Haddam Rd

- Air Line State Park Trail
- Trail Entry/Parking
- Colchester Spur
- Hop River State Park Trail

